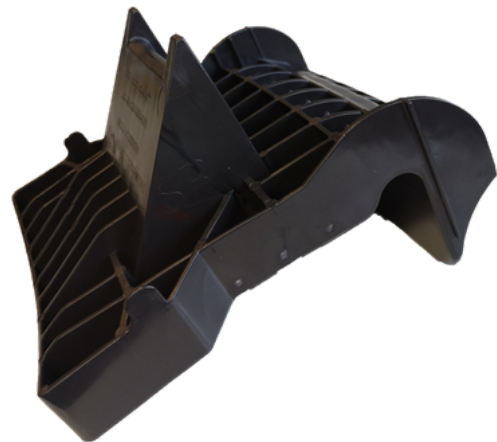


# PEAKED CURVED ANGLE

CODE: A0252

The Peaked Curved Angle is purpose-built to protect sensitive cargo edges during transport, particularly paper rolls. A webbing guide runs over an inward-shifted edge deflector, distributing surface pressure across a larger contact area to prevent crushed edges and strap-related damage. Its robust web-reinforced construction makes it especially well suited for securing both standing and lying paper rolls, while remaining versatile enough for concrete elements, plasterboard, and other high-value goods.

Manufactured from recycled RPC™ material, the Peaked Curved Angle is environmentally responsible and engineered for repeated use, delivering excellent performance under high loads and across a wide operating range of +40°C to -30°C.



## Specifications

Product Code	Dimensions (L×W×H)	Angle	Weight	Material	Tensile strength (ISO 527-2)	Surface hardness (ISO 868)
A0252	130 × 55 × 150 mm	85°	325 g	PP / PEHD (Recycled RPC™)	1,150 MPa	62 Shore D