

TEMPWISE FREEZER MATS

CODE: FREEZER MATS

2 Piece Freezer Mat

Tegral's Freezer Mats, also known as Insulated barriers, or Chiller Boards are essential for creating multi-temp zones in trailers, protecting temperature-sensitive goods and reducing spoilage. Our custom-made freezer mats are the best way to allow for multi-temp zones within your trailer e.g. frozen, refrigerated, and ambient.

Each mat is tailored to your trailer's exact dimensions, forming a tight seal. The internal fiberglass system allows them to flex with the trailer walls and spring back upright, offering easy handling and placement. With multiple handle configurations, and countless optional extras including Optional restraining straps keep them secured against sidewalls when not in use, saving space and keeping things tidy. This saves time and increases efficiency when loading and unloading.



Features and Benefits

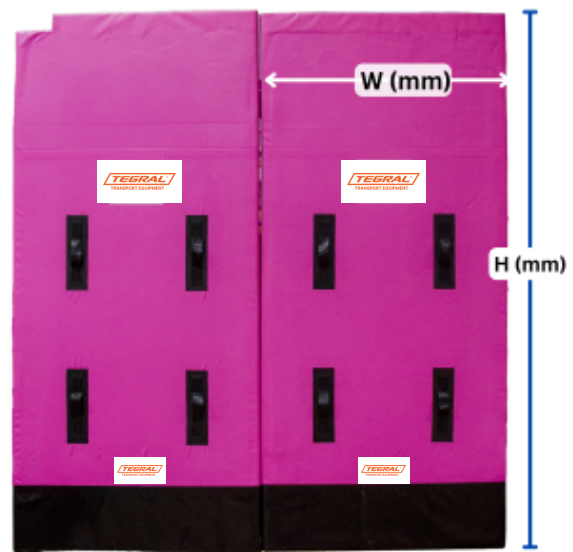
- **Australian Made:** Custom-built locally with quality craftsmanship.
- **Durable & Waterproof:** Reinforced PVC skin and heavy-duty base for long-lasting performance.
- **Lightweight & Easy to Handle:** Foam core with optional webbing or hook-and-loop handles.
- **Excellent Insulation:** Closed-cell foam core for superior thermal performance and energy efficiency.
- **Custom Colours:** Available in blue, pink, red, or your preferred colour for bulk orders.
- **Bolt-Free Design:** Airtight seal without steel nuts/bolts—no heat transfer or cargo damage.
- **Free Branding:** Add your logo, fleet/trailer/reg number at no extra cost.
- **Highly Adaptable:** Options for vents, fan mounts, Velcro systems, angle cuts, strapping, and GPS pockets.
- **Repairable:** Built for cost-effective maintenance and reduced environmental impact.

TEMPWISE FREEZER MATS

Standard Options

Dimensions

Please specify the required dimensions of the chiller board. Measure the height of the panel (from floor to ceiling of the trailer) and the width of your trailer. Additionally, if available, please provide a sketch or photos.



Colour

Our standard selection of colours is blue, pink, and red. If you require a custom colour, please specify.

Webbing Handles

Our chiller boards consist of webbing handles for easy handling. Please specify if you have a specific requirement for handles, and if possible, provide a sketch.



Attachment Facilities (for Shoring bar)

We can offer hook and loop handles for convenient attachment of the board to shoring bars. If you have specific handle requirements, please specify.

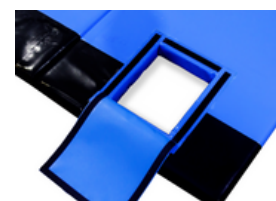


Logo Printing

We are happy to print your logo on the chiller board. Please provide us with the artwork for the logo and/or Fleet No., Trailer No., Rego No., etc., that you would like to have printed on the chiller mats.

Ventilation Holes (Air Bleed) & Angle Cuts

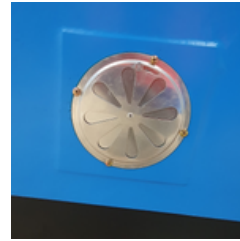
Ensure optimal air circulation by adding vents to your bulkheads. This customisable feature is ideal for maintaining the freshness of your transported goods in different compartments. If you require ventilation holes, please provide a sketch or dimensions of the required ventilation hole.



TEMPWISE FREEZER MATS

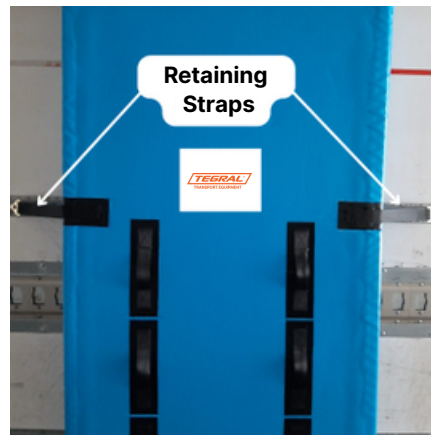
Exhaust fan Cut out (Fan hole)

Take temperature control to the next level by incorporating fans into your bulkheads. We can provide provisions for fitting a fan kit. Please specify the size of the fan opening you require (please note, the fan kit is not supplied).



Velcro to stick boards together and/or to the trailer

We can offer a hook-and-loop strip (Velcro) arrangement for organising boards neatly within your trailer or storage areas. Please specify if you have specific requirements for the location of Velcro strips



Retaining Straps

Enhance the functionality of your bulkheads by adding two retaining straps. We can offer these straps to provide additional support, securing your cargo with ease. Please specify if you require them in specific locations.

Cut-out for GPS tracking unit

We can offer a water-resistant pocket for installing a GPS tracking device on your chiller board. This will allow you to secure your investment by preventing potential misplacement of boards

